

PLATTFORM

CONFI- GURATION MANAGEMENT

easy management of
configuration elements

asset management

inventory
of hardware and software

listing of linked orders

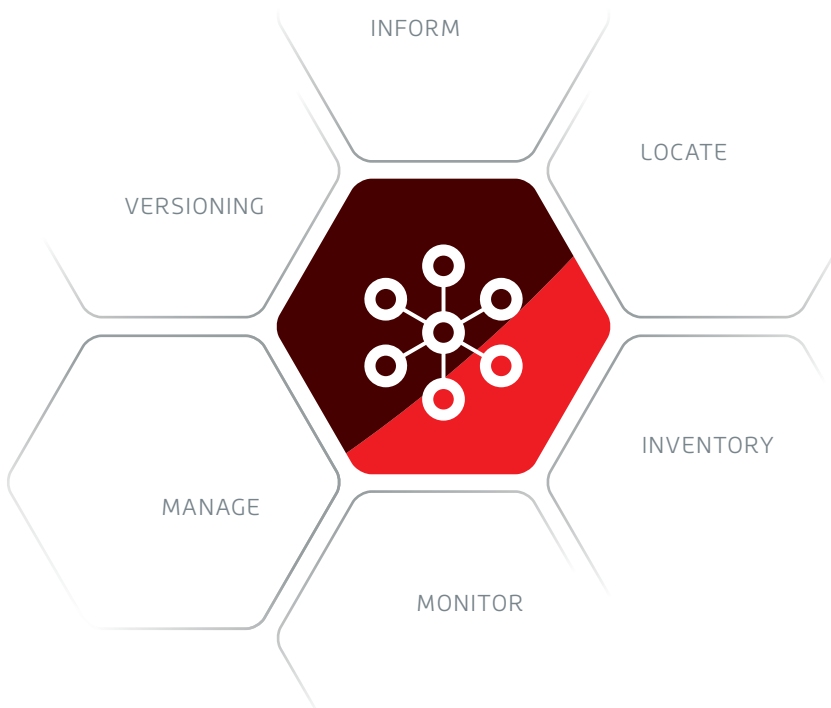
authorization system

clearly arranged display

The 446 Plattform® offers you the possibility to manage all resources and their mutual dependencies in a configuration database. Consolidate all relevant information in one database and use it to support your business processes. Implement quickly visible successes and thus create competitive advantages. You expand the structures step by step, and the configuration database (CMDB) grows with your company.

With the Configuration Management module, you can manage configuration items and their relationships with each other in the CMDB in a simple and structured manner by status, category, and zones. Furthermore, this database can also serve as a resource for the automated management of your assets (Asset Management).

The individual elements of the CMDB are displayed in a tree structure. You can build and design this according to your individual requirements. To enter different types of configuration elements (CIs), you can create corresponding schemas. You can enter configuration elements quickly and easily using a predefined form.



ISONET



IMPORTANT FUNCTIONS AT A GLANCE

LIFE CYCLE

The life cycle of a configuration element is determined by the statuses to be passed through and achieved or by their dependencies. For example, you define that a configuration element can only go from status „New“ to status „Active“ via status „Test“. After creating all desired statuses, the transfers between the individual statuses can be defined.

SCHEMES

In a CI scheme, all settings, fields, actions and service level agreements of a configuration element (CI) are defined and stored. The hierarchy of the schema is used to divide it into different types and categories of items. In the setting „CI types“ you configure which tabs and fields are displayed in the configuration elements. Zone schemas are used to record specific organizational or geographical structures and to enable the creation of a standard hierarchy.

IMPORT

Both zones and configuration elements can be imported within the CMDB. Data sources with different formats are assigned to the corresponding fields. A simulation function can be used to check the basic import process without changing data.

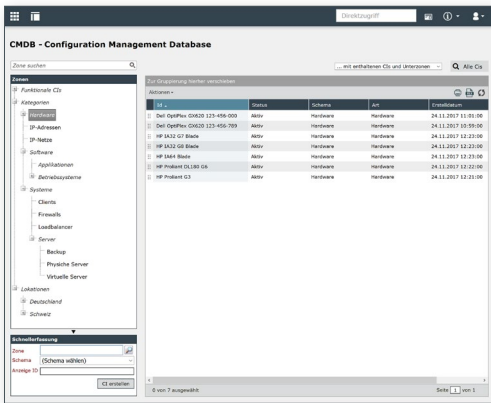
A conflict system monitors the import of fields and relationships and ensures that this data is not overwritten. If the system detects an unauthorized modification, it prevents it and generates a corresponding conflict message.

ACTIONS

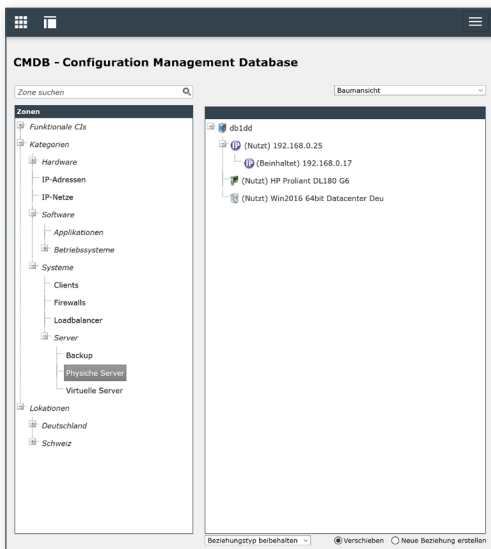
You can add actions to CI-Schemas. For each action, you can define the status in which an action should be visible and executable.

For example, the following actions can be configured:

- change affected user
- database query
- start an external application
- change supplier
- change status



MANAGEMENT OF CMDB
list views of the configuration elements



MANAGEMENT OF CMDB
tree view of configuration elements